

# 40-450 Watt

High efficiency monocrystalline silicon solar modules

0~+3% tolerance

ISO9001:2008, ISO14001:2004, OHSAS18001

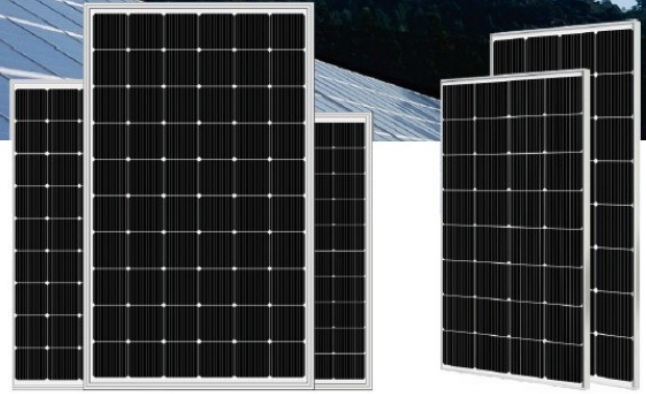
Factory certificates

IEC61215, IEC61730, UL1703 Product certificates



# TRISOL<sup>®</sup> PERC 182 Cell 450W

## SP200M-32



## Solar module features



### PERC 182 cells

Better capability of current collection, larger area of power generation, nice appearance, more suitable for installation on the roof.



### High output power

Using PERC battery structure technology (Low resistance characteristics), output power of 60pcs monocrystalline cells reaches Max 450W (Highest Conversion efficiency to 20.9%)



### Low light performance

Using excellent glass and texture surface making of solar cell, outstanding performance can be obtained in low light condition.

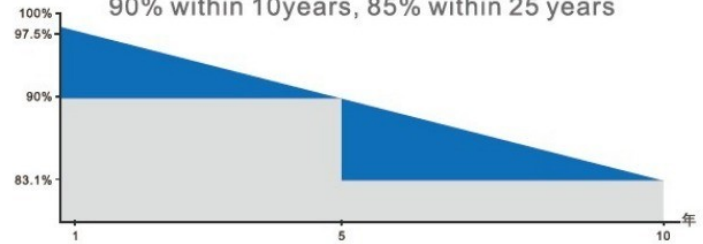


### Adaptability of harsh environment

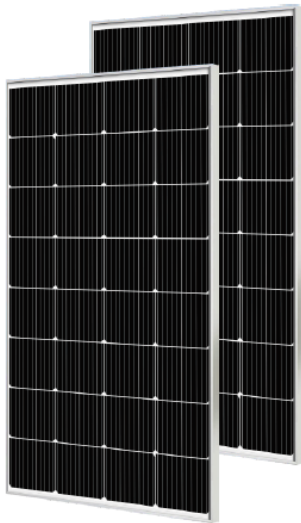
Corrosion tests have certified in high salt fog and high ammonia environment.

## Guaranteed output power

90% within 10 years, 85% within 25 years



## Module Picture



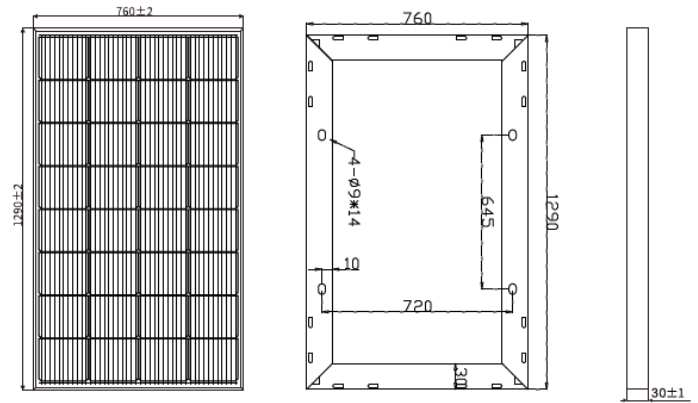
## SP200M-32

### Comprehensive Certificates

- IEC61215, IEC61730
- ISO9001:2015 Quality management systems
- ISO45001: Environmental management systems
- ISO45001:2018 Occupational health and safety management systems



## Mechanical Diagrams



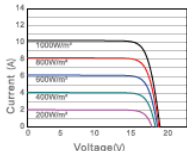
PS: Frame color and cable length can be customized

## Electrical Parameters at (STC)

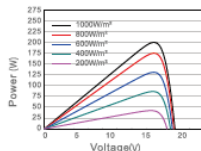
Module	Power (W)	Module Efficiency(%)	Voltage at Pmax(Vmp)	Current at Pmax(Imp)	Open Circuit Voltage(Voc)	Short Circuit Current(Isc)	Power Tolerance(w)
SP200M	200W	20.40%	18.24	10.96	21.80	11.62	±3%

## Characteristics

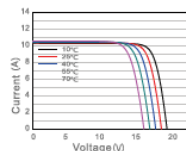
Current Voltage Curve SP200M/32



Power Voltage Curve SP200M/32



Current Voltage Curve SP200M/32



Mechanical Parameters		Packing	
Solar Cell(Type/Size)	MONO(182mm)	Module Type	SP200M-32
Solar Cells Number	32Pcs(4x8)	Carton Size	1310x780x75mm
Dimension	1290x760x30mm	Number	2Pcs/Ctn
Weight	10.3Kg/Pcs	Weight	21Kg/Ctn
Tempered Glass	3.2 mm High Permeability Coated	Volume	0.077Cbm/Ctn
Frame	Anodized aluminum alloy	20GP Container	784Pcs
Junction Box	IP67, 2* bypass diode	40HQ Container	1836Pcs
Cable	2.5mm <sup>2</sup> , (+)700mm/(-)700mm		
Connector	Original MC4/Compatible MC4		
Mechanical Load	Front 5400PA/back 2400PA		

STC: Light intensity 1000W/m<sup>2</sup> Battery temperature: 25°C atmosphere quality=15

NOCT: Light intensity 800W/m<sup>2</sup> Battery temperature: 20°C atmosphere quality=15 wind velocity 1m/s